



Draft 10-Year Vision

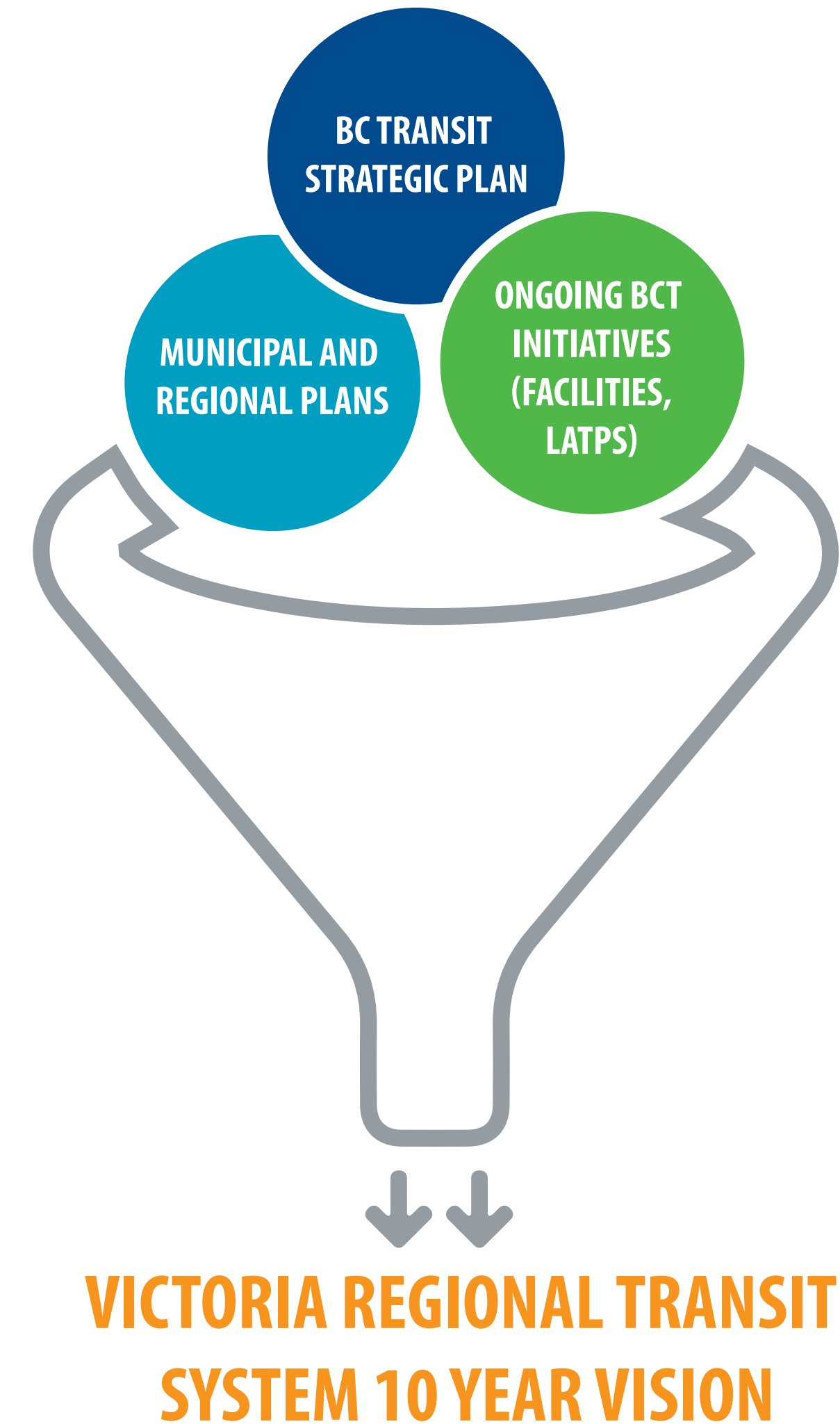
Victoria Regional Transit System

August 11, 2020

WHY A TRANSIT VISION?

Transit has tremendous potential to contribute to stronger, more sustainable communities. The need to realize this potential in the Victoria Region is increasingly important because of factors such as climate change, affordability, population growth, increasing traffic congestion, and an aging demographic.

This document outlines the vision for the Victoria Regional Transit System over the next 10 years, and summarizes all of the plans, projects, and priorities seeking to move the transit system towards that vision. This document is an annually updated, actionable and measurable strategy, providing both the Commission and the public a roadmap for transit development into the future.



COVID-19: NEW CHALLENGES AND NEW OPPORTUNITIES

As a result of the COVID-19 pandemic, we know that our communities may look different when we get through this and we need to be ready to respond to varying transportation patterns and changing customer expectations.

In collaboration with our partners, BC Transit is developing strategies to recover ridership that will address emerging service needs, new cleaning and comfort standards, communication and technology enhancements, and infrastructure projects that will continue to show the value of transit in our communities. Our customers are counting on us to continue to get them safely where they need to be, and it's our responsibility to be flexible, adaptable and resilient to allow for that to continue both now and into the future.



VICTORIA REGIONAL TRANSIT COMMISSION

Decisions regarding transit services and funding in the Victoria region are made by the Victoria Regional Transit Commission. The Commission is appointed by the Lieutenant Governor in Council from persons holding elected office, chosen from municipalities specified in the **BC Transit Act**.

The regional commission in Victoria consists of eight voting members and one additional non-voting student representative.

In the Victoria regional transit service area, the Commission is responsible for:

- determining route configurations and transit service levels,
- setting fares,
- reviewing and making recommendations for the annual operating budget and capital spending, and
- raising the local share of the annual cost of transit service in the region.



Susan Brice, Current Chair of the
Victoria Regional Transit Commission

VICTORIA REGIONAL TRANSIT SYSTEM VISION STATEMENT

“To be a leader of integrated transportation solutions connecting people and communities to a more sustainable future”



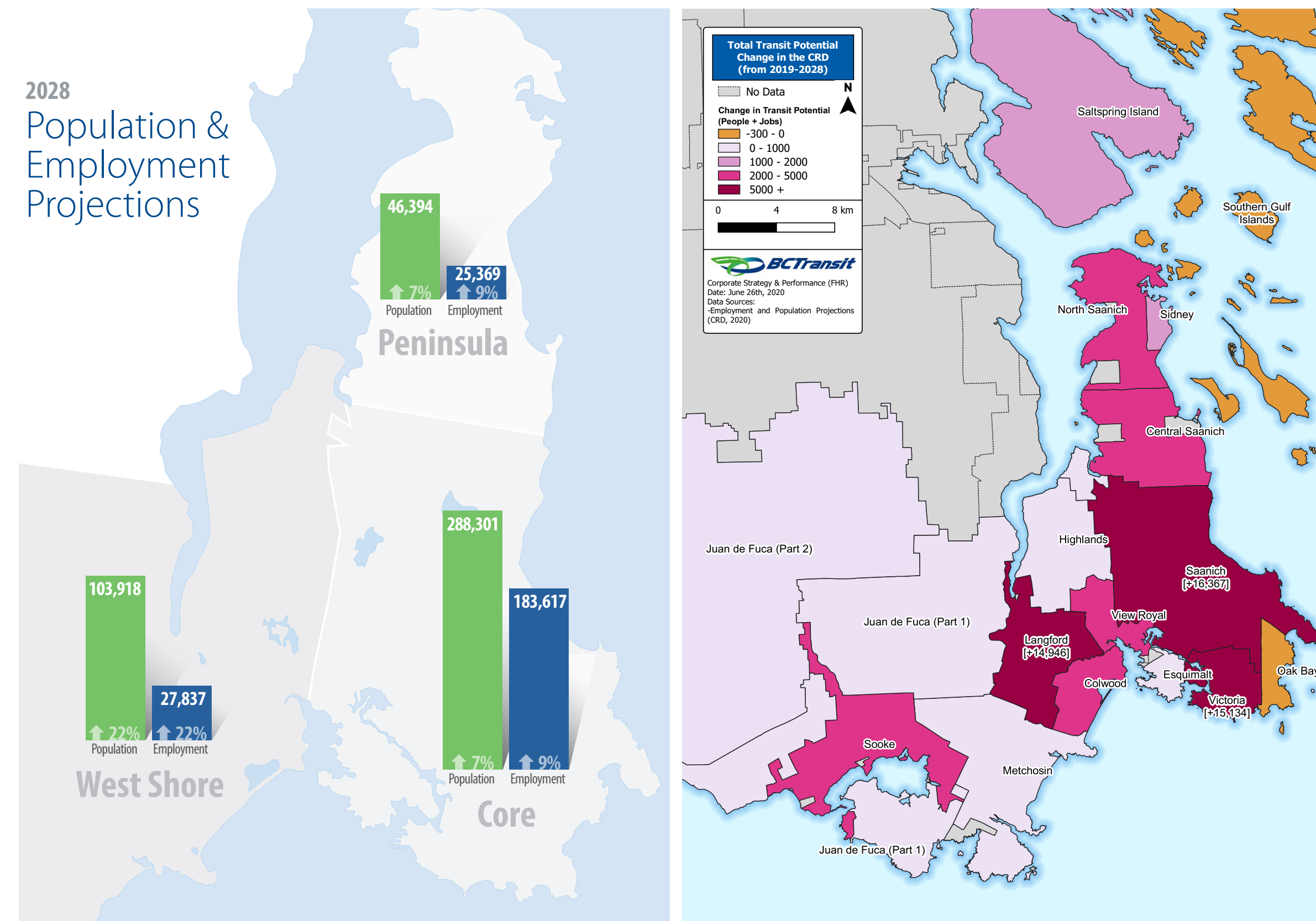
CRD POPULATION AND EMPLOYMENT BY 2028

Understanding where future population and employment growth is anticipated is critical for effectively planning transit service investment.

The CRD 2019-2038 Population, Dwelling Units and Employment Projection Report prepared by BC Stats estimates the Region's growth management planning area population was approximately 396,500 in 2019. The report projects a 10.6 per cent growth in population over the next 10 years, to a projected population of 438,600 by 2028.

More than half of the projected population growth in the region will occur in the West Shore, which will see an estimated 22 per cent increase in its population – In particular, Langford will see its population grow by an estimated 31 per cent. While the Core Region will still accommodate the majority of the population, the growth in the West Shore will likely shift the Region's travel patterns and increase transit demand in alignment with population growth.

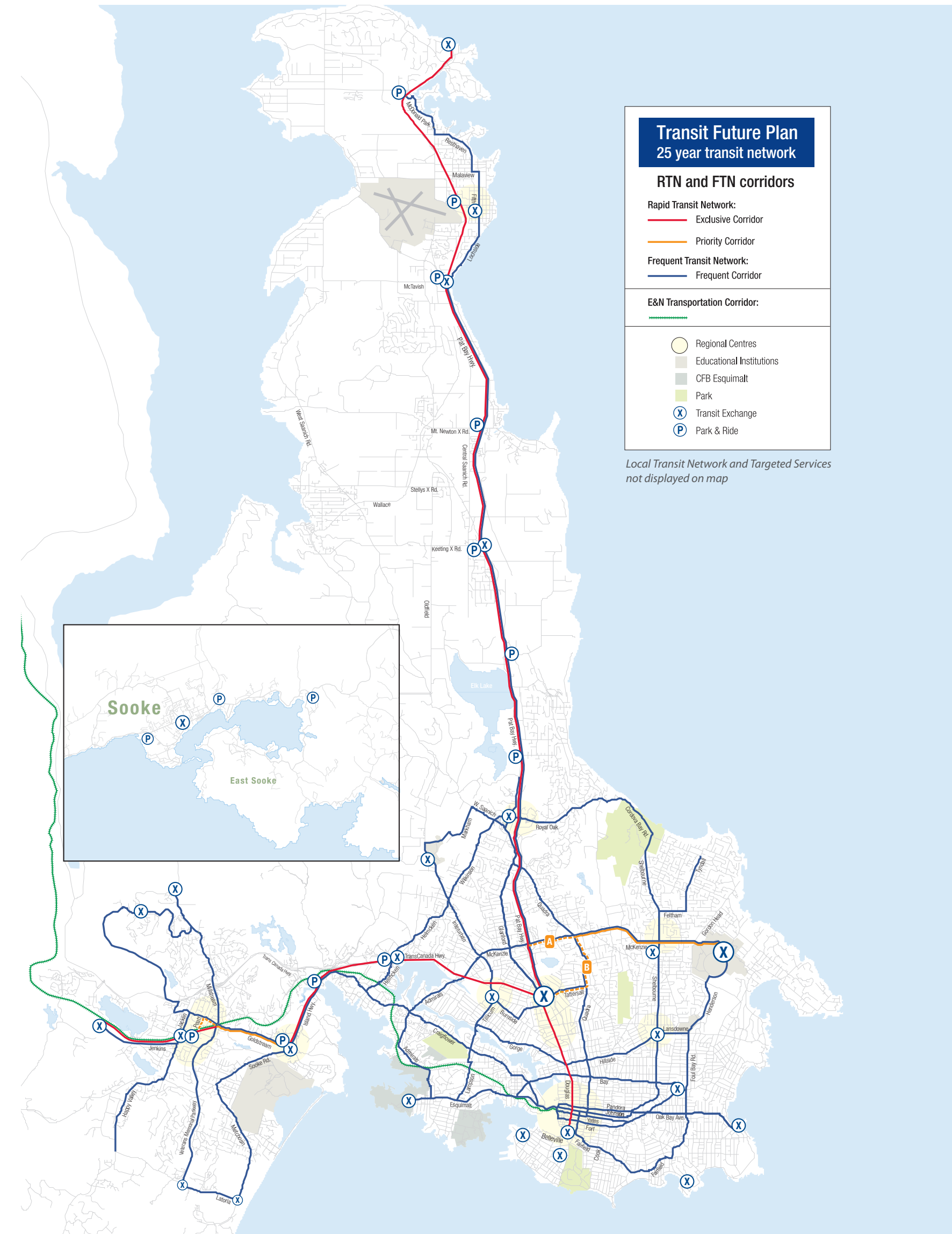
Employment in the region is expected to grow at a similar rate as population, with the highest employment growth projected in the West Shore; however, the Core will continue to account for the majority of jobs in the Region overall.



Projected change in population and employment within the CRD (2019-2028)

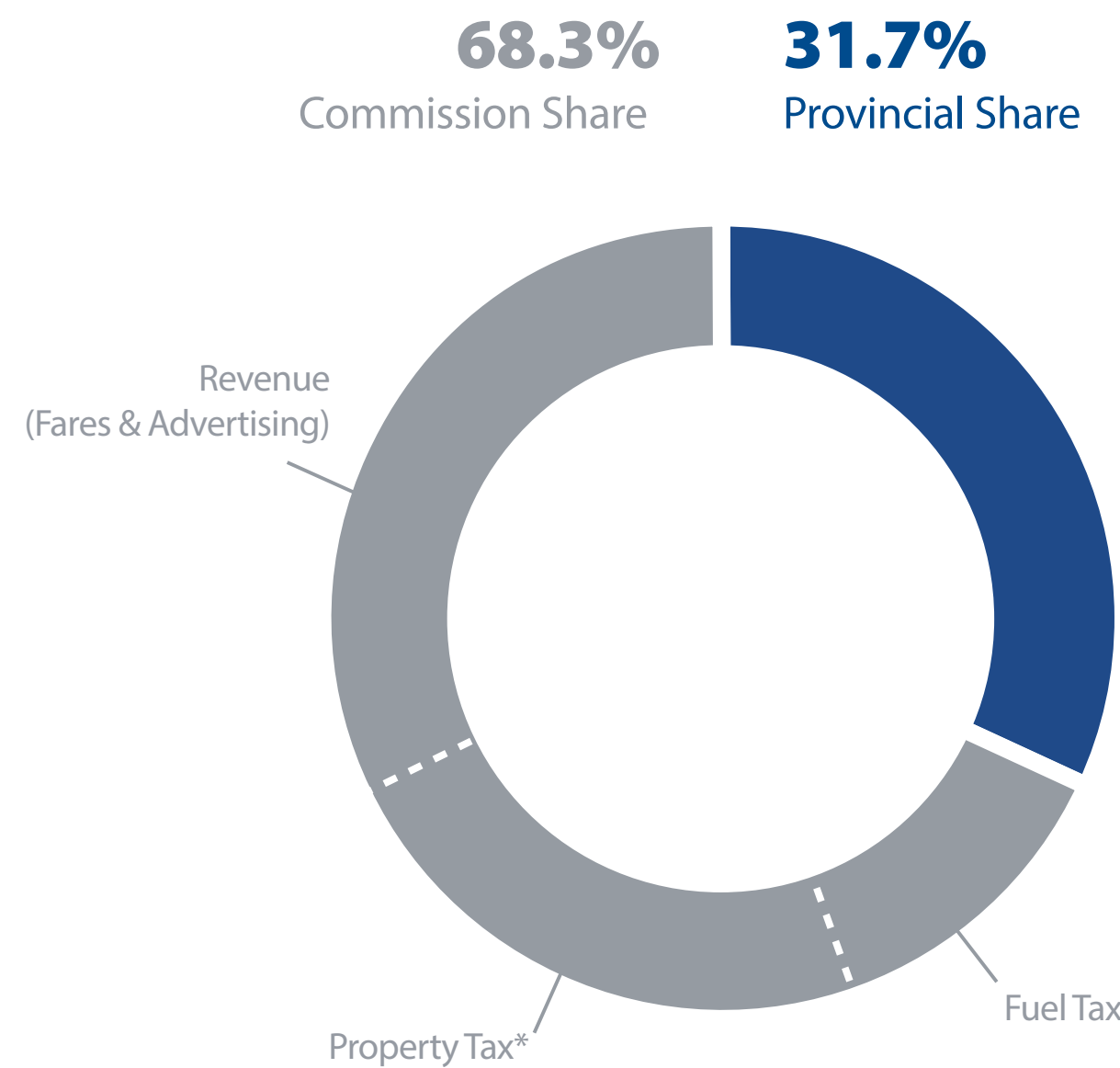
VICTORIA REGIONAL TRANSIT SYSTEM

Transit Future Network

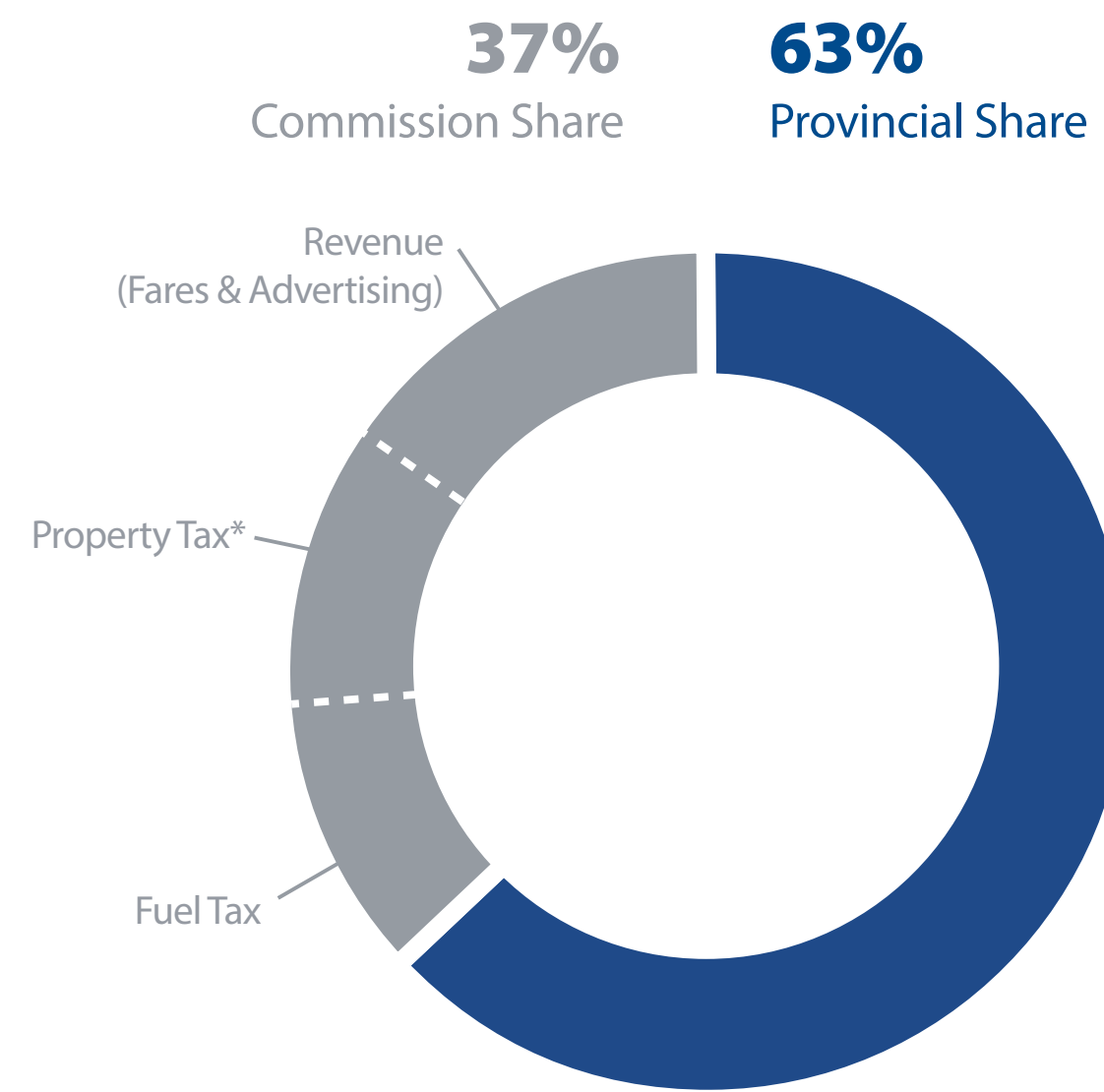


VICTORIA REGIONAL TRANSIT SYSTEM OVERVIEW

Victoria Regional Transit System – Legislated Funding Formula

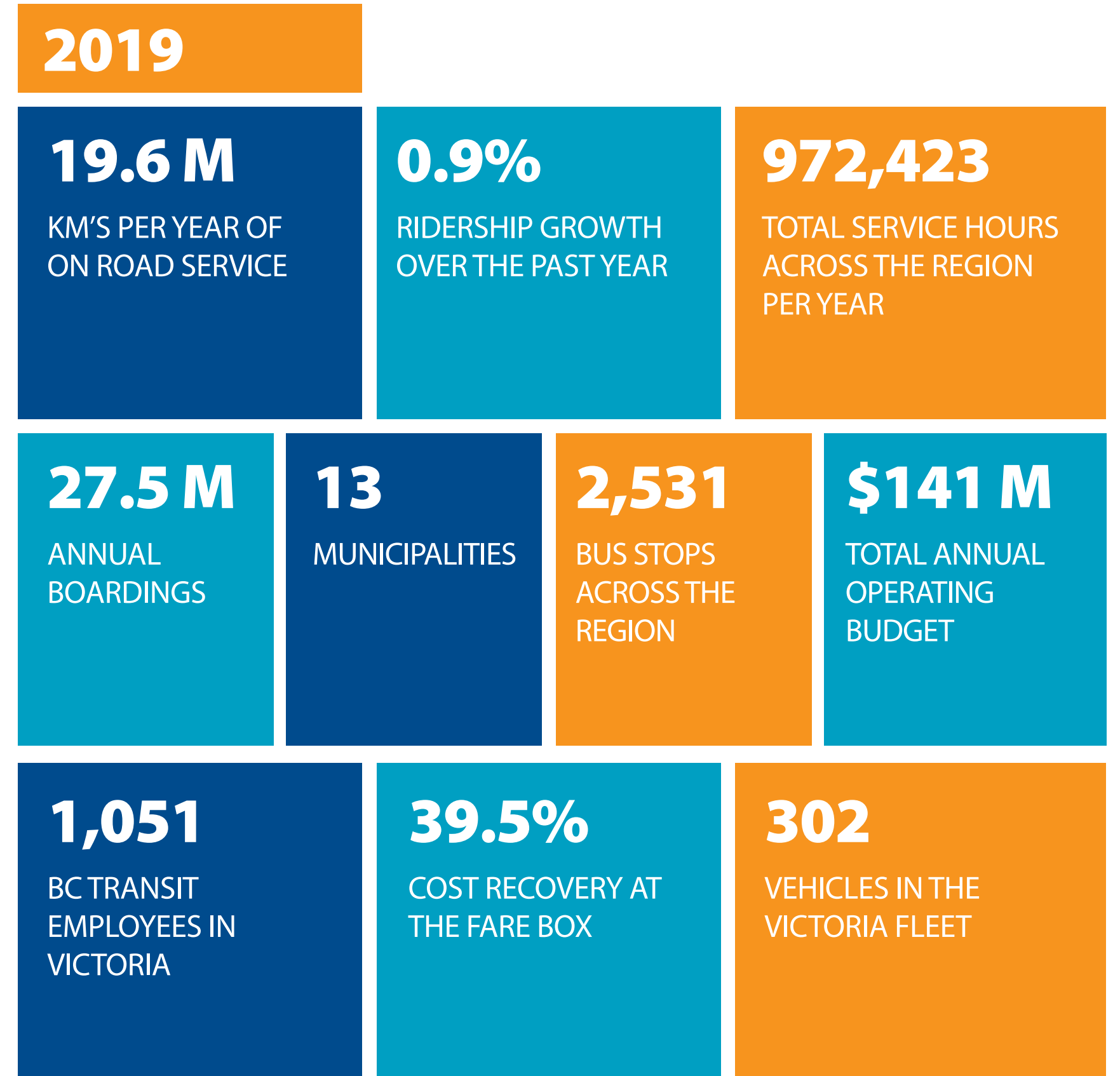


Conventional Transit



Custom Transit (handyDART)

*Business to residential property tax ratio is 4.85 to 1.



KEY PERFORMANCE INDICATORS

These performance indicators were selected to track the performance of the Victoria Regional Transit System over time, and will be reviewed annually. Some of these performance indicators require further input from the Victoria Regional Transit Commission before specific targets are set.

MODE SHARE

PROPORTION OF TRIPS TAKEN BY TRANSIT

	POPULATION	CURRENT MODE SHARE	2039 MODE SHARE TARGET
CORE	65.8%	9.0%	20%
WESTSHORE	23.1%	4.9%	10%
PENINSULA	11.1%	3.9%	5%
REGION TOTAL	100.0%	7.8%	15%

SERVICE RELIABILITY

	2019/20 AVERAGE	TARGET
PROPORTION OF SCHEDULED TRIPS DELIVERED	99.4%	99.8%

TRIP COMFORT

AVERAGE PROPORTION OF TRIPS WITH SEATS AVAILABLE

	2019/20 AVERAGE	TARGET
RAPID TRANSIT NETWORK	42%	
FREQUENT TRANSIT NETWORK	35%	
LOCAL TRANSIT NETWORK	53%	
SYSTEM WIDE	44%	TBD

ACCESS TO TRANSIT

2016 CENSUS POPULATION AND 2019 SERVICE LEVELS

	2016 CENSUS POPULATION AND 2019 SERVICE LEVELS	TARGET
PROPORTION OF POPULATION WITH A 5 MINUTE WALK TO TRANSIT	87.3%	TBD
PROPORTION OF POPULATION WITHIN A 5 MINUTE WALK TO FREQUENT TRANSIT (15 MINUTE OR BETTER SERVICE FROM 7 AM TO 7 PM, 7 DAYS A WEEK)	34.4%	TBD

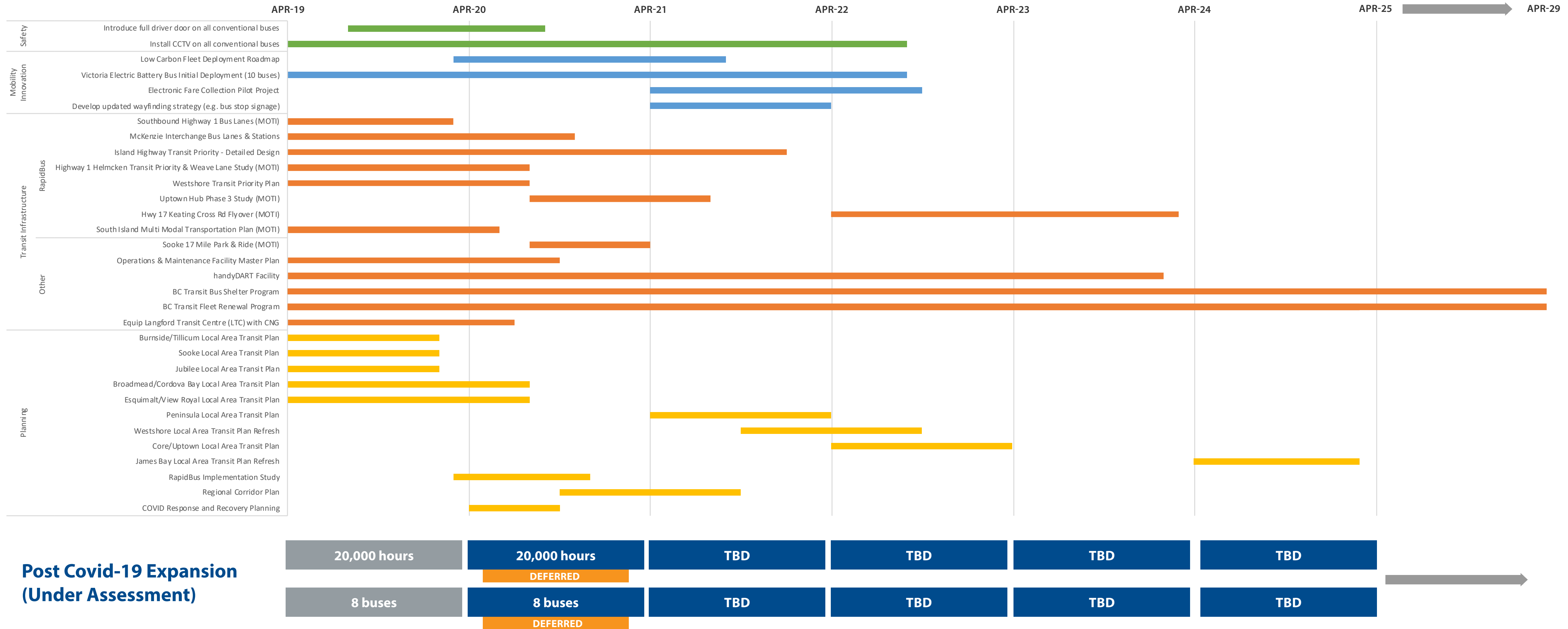
CUSTOMER SATISFACTION

PROPORTION OF TRANSIT USERS INDICATING THEY ARE EITHER SATISFIED OR VERY SATISFIED WITH THE TRANSIT SYSTEM

2020 CUSTOMER SATISFACTION SURVEY

	2020 CUSTOMER SATISFACTION SURVEY	TARGET
TOTAL SATISFACTION	71%	TBD

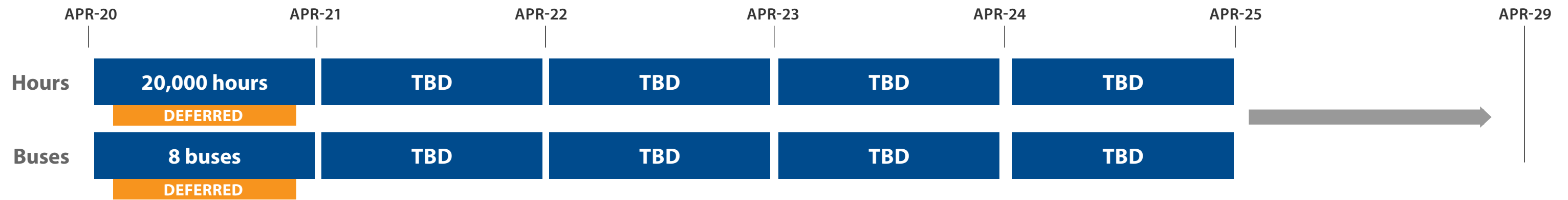
ACTIVE & SCHEDULED VRTS PROJECTS AND PLANS



PLANNED VRTS PROJECTS AND PLANS

SUBJECT TO APPROVAL

Post Covid-19 Expansion
(Under Assessment)



SHORT-TERM PRIORITIES

- UVIC Exchange Phase 2
- VTC/LTC Operations & Maintenance Facility Enhancements and Modernization
- Victoria 3rd Operations & Maintenance Facility Pre-Implementation Work
- Westshore Park & Rides
- RapidBus Enhancements
- Uptown Local Area Transit Plan
- Westshore Island Hwy RapidBus Enhancements

MEDIUM/LONGER-TERM PRIORITIES

- RapidBus Enhancements
- Victoria 3rd Operations & Maintenance Facility Build
- McCallum Transit Terminal
- Swartz Bay Transit Terminal
- Tillicum Approaches Bus Lanes (MOTI)
- Transit Priority – Frequent Transit Network
- Victoria 4th Operations & Maintenance Facility
- Sooke Transit Hub
- Uptown Transit Hub
- Jubilee Transit Hub
- Dockyard Transit Hub
- Royal Bay Transit Terminal
- Royal Oak Transit Hub

TRANSIT EVALUATION PROCESS (TEPS)

Given the growth and increasing demand for transit in the Victoria Region, there are always competing priorities for what should be improved first

The Transit Evaluation Process is the procedure by which all the various expansion options are compared, prioritized, and phased over time as expansion resources become available.

Proposed service improvements are currently ranked using a range of criteria including population served, potential ridership, and impact on service reliability. These priorities will be revisited annually and shared with the Victoria Regional Transit Commission for endorsement.



IMPLEMENTING THE VISION

In concert with other planning process and the many stakeholders we serve, this vision document will be reviewed annually to address emerging trends and performance. As part of our continued commitment to public involvement, this vision document will be shared with our Local Government, First Nations and major stakeholders. It will also be available online to our customers and the general public.

This document is intended to serve as the overarching framework for the plans for the Victoria Regional Transit System and support our key stakeholders in the development of their own plans and processes.

