

OCTOBER 2023

Transit Shelter Program



newshelterprogram@bctransit.com



TABLE OF CONTENTS

BC Transit Shelter Program

Preface.....	3
Background.....	3
The New Standards – BC Transit Shelter Designs.....	4
BC Transit Shelters – Overview of Costs	5
Shelter Purchase Options.....	7
1. Shared Provincial Funding.....	7
2. Direct Purchase.....	8
Application Process – Provincial Funding.....	8
Selection Criteria.....	9
Order Quantities.....	9
Detailed Costs.....	10
Spare Parts – All Purchase Types.....	10
Infrastructure and Maintenance	11
Appendix A: Application & Approval Process.....	12
Sample Bus Shelter Request Form.....	13
Appendix B: Detailed Schedule of Costs	15
Shelter Series Overview – Lighting & Ad Panel Options.....	20
Add-ons, Options and	21
Additional Costs	23
Appendix C: Travel Rate Price.....	24
BCT Travel Matrix Price Schedule	25
Travel Rate Zone Matrix	26
Appendix D: Spare Parts Prices	27
Appendix E: Sample Concrete Pad Drawings	29

Preface

BC Transit is pleased to provide an updated overview of bus stop shelter designs for use around the province. The design concepts were created to standardize the look, feel and functionality of bus stop amenities while improving the transit experience for customers.

Simultaneous with the implementation of shelter design standardization, BC Transit introduced a capital upgrade funding program to assist municipalities in acquiring these shelters. This funding program has been instrumental in facilitating the installation of more than 500 standardized shelters since 2010.

Background

Bus stops are the access point for every customer using BC Transit service. While they can be a positive feature of transit travel, they are often cited as a barrier to transit use due to poor quality shelters, inadequate lighting or other design and infrastructure characteristics. Market analysis has shown shelters and improvements at bus stops were among the top five enhancements needed to encourage new riders to transit who are currently using other modes of travel.

Feedback from municipalities across BC have indicated a desire for a standardized design and provincial procurement strategy. BC Transit embarked on an initiative to examine the existing bus stop infrastructure and shelter configurations around the province. Historically the selection of shelter design and functionality has been led by the municipality for which the service is being provided. As such, a broad variety of manufacturers and designs have been utilized, and no set standardization methodology or procurement strategy employed (Figure 1).



Figure 1: Examples of existing shelter diversity

This program provides municipalities with access to capital funding in order to purchase standardized shelters for use in their communities. The objectives are to provide improved amenities to customers, reduce procurement and ongoing maintenance costs incurred by municipalities, and improve overall ridership levels.

The New Standards

BC TRANSIT SHELTER DESIGNS

As the bus stop shelter program has grown, feedback received from the participating municipalities, installation crews and manufacturers has resulted in further shelter design improvements such as more vandal resistant perforated mesh and harsh weather shelter designs.

Shelter designs feature modularity for future expansion and energy efficient LED grid and solar powered lighting options and many more.

Shelter designs are classified by “Type” based on the expected number of users and application:

- **Type 1** – bus stop upgrades
- **Type 2** – low to medium passenger boardings per weekday (10-20)
- **Type 3** – moderate to high passenger boardings per weekday (21-200)
- **Type 4** – park and rides (less than 100 stalls), small transit exchanges, stops with high levels of passenger boardings per weekday (400+)
- **Type 5** – rapid bus, tram stations

All BC Transit shelters have modular components that allow for the overall length of the shelters to be expanded or contracted post-production to accommodate and meet ridership capacity unique to each shelter location. This modular design features a cantilevered structural roof design, allowing you to choose side panels or additional back panels.

Standard Design Highlights

- Perforated back & side walls
- Mechanically sealed roof system
- Cantilevered structural design
- Corrosion and vandal resistant design
- Wood and timber architectural accents
- Designed and engineered to exceed wind, snow, and seismic loads throughout B.C.













Figure 2: BC Transit Type based shelters in the field



BC Transit Shelters – Overview of Costs T-Series

Typical BASE costs* for each type of shelter (excludes any applicable taxes, CPI (consumer price index), additional variable costs incurred for installation such as ferry and travel costs or add-on's such as site surveys, BC Transit program management costs, traffic control, and permitting fees). Refer to Appendix E for shelter footprint sizes.





Shelter Type	Woodland T-Series Shelter Designs	
Type 1: Bus stop upgrades Free standing bench with back rest or ID pole mounted seat with 1 or 2 seater bench (price varies)		
	\$2,750	\$3,280
Type 2 (T2) Series: 10 – 20 passenger boardings per day Cantilevered, single back wall, single bench seat, tempered glass panels available		
	\$16,109	
Type 3 (T3) Series: 20 – 200 passenger boardings per day Cantilevered or side wall design, 1 bench seat, optional extra rear panel, tempered glass panels also available		
	\$23,012	\$24,893
Type 4 (T4) Series: 400+ Cantilevered or side wall design, 2 bench seats, optional extra rear panel		
	\$34,117	\$34,898
Type 5 (T5) Series: custom Rapid bus/Tram Station		
	Starting at \$59,902 for 20 foot style. Priced by location.	Starting at \$120,389 for 40 foot style. Priced by location.
Signature Series Glass wall design with a glass roof		
	\$19,876	

*Prices referenced are for the basic model with no lighting but include onsite installation costs. Prices do not include applicable taxes additional variable costs for travel, or BC Transit program management costs.

*Refer to Appendix B – Detailed Schedule of Costs for additional costs and further details. Refer to Appendix E for shelter footprint sizes.

E Series

Side wall design only, bench seats based on size, harsh weather design also available

Shelter Type	Woodland E-Series Shelter Designs
Type 2 (E2) Series: 10 – 20 passenger boardings per day Intended for locations in low to medium levels of daily passenger boardings	 \$17,539
Type 3 (E3) Series: 20 – 200 passenger boardings per day Accommodates bus stops with high daily levels of passenger boardings	 \$25,463
Type 3 (E3) Harsh Weather Series: 20 – 200 passenger boardings per day Accommodates bus stops with high daily levels of passenger boardings. Provides extra protection from the elements, such as wind, snow, rain. Recommended with glass walls for visibility	 \$27,707
Type 4 (E4) Series: 400+ passenger boardings per day Harsh Weather available Primary use in a Park & Ride (less than 100 spaces) or small on street transit exchanges, and stops with high levels of passenger boardings	 \$34,330

Shelter Purchase Options

Municipalities interested in purchasing one of the BC Transit standard shelter designs can do so in one of the following ways:

SHARED PROVINCIAL FUNDING

1. Lump Sum Contribution

Municipalities can choose to purchase via a lump sum payment to BC Transit upon completion of installation. As per the provincial funding model, municipalities are responsible for a percentage of the total cost of the shelter(s) as per the standard cost splitting model for their conventional service.

Federal funding has been secured to help further lower the capital cost of new bus stop amenities. The program is jointly funded by the Federal and Provincial Government under the Investing in Canada Infrastructure Program (ICIP). Availability of this funding depends on the level of participation in the program.

If the shelter request has been approved, the municipality will receive a contract from BC Transit confirming the locations, responsibilities of each party and the estimated lump sum total, exclusive of: taxes, additional packaging and freight charges to their location, allowances for installation crews, shelter storage fees, or BC Transit program management costs. Upon return of a signed copy of this contract, BC Transit will place the orders.

Following completion of all shelter installations in the requesting municipality, BC Transit will invoice for the agreed portion of the costs. Any costs incurred that are not covered by the shelter program will be discussed prior to being incurred.

2. Financing through Addendum to AOA

If the municipality requests to access funding via an addendum to their Annual Operating Agreement (AOA), BC Transit will recover the municipal portion of the capital funding through an annual charge back of the debt service costs over the useful life of the asset. Debt service charges will begin in the month that the asset is placed in active service.

The estimated financing costs will be outlined to the municipality in the contract confirming approval of shelter request. The estimate will be exclusive of taxes, additional packaging and freight charges to your location, allowances for installation crews, shelter storage fees, or BC Transit program management costs.

MUNICIPALITY FUNDED PURCHASE

3. Direct Purchase

Municipalities that would prefer to purchase any of the standardized shelter designs directly without cost sharing, can access BC Transit's negotiated standing offer pricing via direct purchase orders. Developers and regions not identified in an active AOA are eligible to purchase shelters through the program but are not eligible for cost sharing. These purchases will be managed by BC Transit and 100% of all costs will be billed to the requestor.

Municipalities are strongly encouraged to consult with BC Transit prior to engaging in the planned installation of any new transit infrastructure in their communities, to ensure that there are no conflicts with possible service changes, scheduling, route changes or operational and safety concerns. BC Transit recommends that the bus shelter approval process be followed in the same manner as for shelters being purchased under the provincial cost sharing program.

Application Process for Capital Funding

Funding for the BC Transit Bus Stop Shelter Program is limited and funds will be allocated based on a first come first served basis while ensuring equity across the province. All requests for shared funding purchases will be reviewed by BC Transit based on internal selection criteria prior to approval and prioritization of locations may be required if demand exceeds the annual budgeted provincial funding amount for any given year.

Municipalities are requested to follow the application process as indicated in Appendix A –Application Process.

A quick link to the online application form can be located on each municipality web page which is then submitted to BC Transit via the online portal. Using Victoria as an example:

<https://www.bctransit.com/victoria/transit-future/corporate-infrastructure-initiatives/transit-shelters>

SELECTION CRITERIA

BC Transit will place all applications through a series of selection criteria to ensure that the best utilization of the shelter is achieved by the municipality, and the local transit network. The selection criteria used to assess any proposed shelter installation location includes:

- Number of passenger boardings per weekday (where data is available)
- Operational planning network plans
- Long term strategic planning network plans
- Safety of location in terms of passengers, operators, and general traffic
- Historical or present operation concerns
- Available funding
- Initial site survey details

BC Transit encourages the participation from all municipalities in integrating the BC Transit standardized designs into the local networks wherever possible. In the rare instance where a municipality has an application reviewed and subsequently denied by BC Transit based on the selection criteria, the municipality is invited to discuss the decision with BC Transit directly. The intent is to determine if any unique circumstances exist which would warrant the approval of the location.

Applications for shelters on Ministry of Transportation and Infrastructure (MoTI) Right of Way (ROW) will be denied. The provincial government has a program intended to address these locations. If your desired bus stop is on a MOTI ROW, you are encouraged to apply for funding from the Minor Betterments Program. More information can be found here:

<https://www.tranbc.ca/tag/transit-minor-betterments-program/>

ORDER QUANTITIES

Any approved orders that meet or exceed the selected manufacturer's minimum order quantities (MOQ) will be processed under normal stated manufacturer lead times. If shelter MOQ's are not met by one individual order, this order will be held for consolidation with additional orders from across the province until such time as the MOQ quantity is reached. Once orders are submitted and finalized with the manufacturer(s), delivery dates will be determined and installation schedules will be negotiated.

Detailed Costs

Detailed breakdown of costs, including what accessories are included or available for purchase, are outlined in Appendix B – “Detailed Schedule of Costs”

BC TRANSIT OWNED ASSETS

Under the capital update program, the bus shelters are owned by BC Transit as assets in order to facilitate the capitalization of costs and allow for cost sharing with participants.

Cost sharing for shelter purchases under the Bus Stop Program will follow the standard contribution agreement for capital projects.

The capital costs for the shelters will be split between the Local Government Partner and the Province at the rates set out by the cost sharing models in each system's Annual Operating Agreement (AOA). Through ICIP, BC Transit applies for Federal funding, which may reduce the Local share of eligible costs to 20%. Please contact newshelterprogram@bctransit.com for more details.

BC Transit will offer any assistance required in the form of technical clarification, estimating, presentation materials or personnel to municipalities if specific Council approvals are required to proceed with purchase and implementation.

Spare Parts – All Purchase Types

As part of the capital program, BC Transit has negotiated fixed pricing with the manufacturer on spare parts and an agreement for them to hold limited stock of replacement parts at the manufacture's location for a maximum of five years after installation. These are available for purchase by any municipality utilizing the standard shelter designs, regardless of purchase method.

Any municipality requiring spare parts for maintenance work must request these directly from the supplier. BC Transit will not be stocking replacement parts for the shelter designs at any of BC Transit's facilities.

A list of spare parts and price list can be found in Appendix D.

Infrastructure & Maintenance

The municipality is responsible for any civil and electrical work required to prepare a site for shelter installation. This includes the funding and construction of any infrastructure such as, but not limited to, bus pads or engineered foundations, pullouts, sidewalk construction, and electrical grid connections where required.

Municipalities, through their acceptance and willing participation in this program, agree to maintain the BC Transit shelters in accordance with standard industry practice. Solar powered shelters require the roof solar panels be regularly cleaned to ensure full system functionality and maintain the solar powered lighting warranty. Failure to properly maintain the solar panels will lead to premature lighting failure and greatly reduced battery life. This maintenance, funded 100% by the municipality includes (but is not limited to) the following regular maintenance items:

- Removal of snow and ice when required
- Removal of garbage
- Prompt removal of graffiti
- General cleaning (power washing) of structure on a regular basis
- Soft clean solar roof panels and remove debris monthly
- Monitoring and replacement of damaged components in a timely manner
- Proper maintenance of solar batteries

The municipality, through the acceptance and willing participation in the program, accepts the responsibility for the maintenance and care of these assets as indicated above. Failure to maintain, repair, and keep in good order may impair the ability for the municipality to apply for future shelter funding.

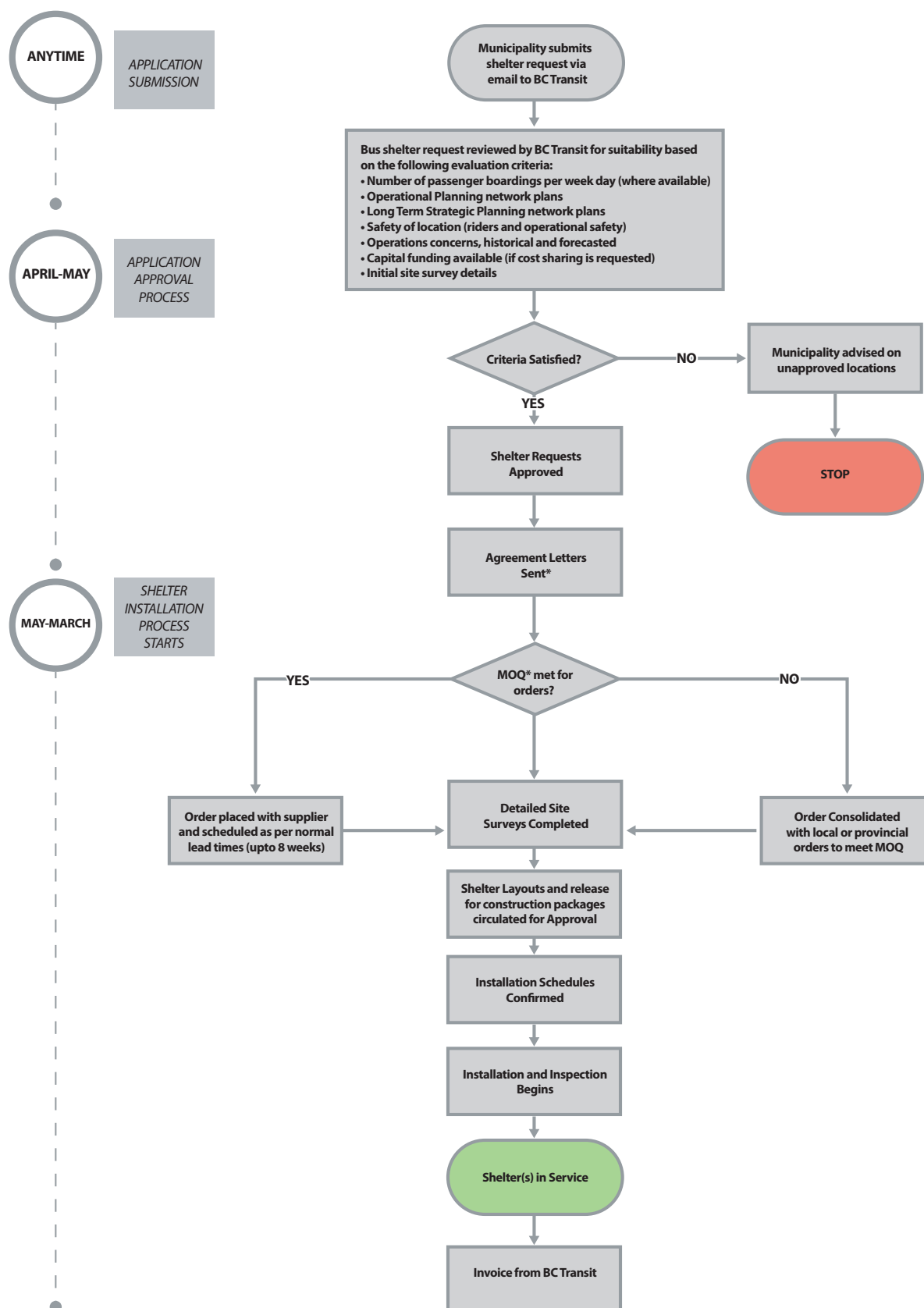
PREPARING YOUR SITE FOR INSTALLATION

Each municipality is responsible for ensuring that the site is fully ready for installation on the scheduled date. To help municipalities with the process please contact newshelterprogram@bctransit.com and a guide can be supplied for tips on how to prepare your site. If the site is not ready on the installation date, additional costs will apply and may impact municipalities' eligibility for future shelter purchases.

Appendix A

Application Process

BC Transit Shelter Application and Approval Process



*MOQ = Minimum shelter order quantity from supplier

*Review is based on the selection criteria, Page 9

*Agreement Letters are sent based upon Budget approval.

BC Transit Shelter Request Form

Bus Shelter Request Form

[Clear Form](#)


Request submitted by:			
MUNICIPALITY:		DATE:	
Contact Information:			
NAME:	PHONE:	EMAIL:	
Signing Authority Contact			
NAME:	TITLE:	EMAIL:	
Future Planning		Priority: If submitting more than 1 application per fiscal year	
DESIRED FISCAL YEAR	Options	RANKING	Options
Proposed Location for Shelter Placement Details			
BC TRANSIT STOP ID# (if known)	FLOATING BUS STOP?	<input type="radio"/> YES <input type="radio"/> NO	
STREET NAME:	NEAREST CROSS STREET:		
INTERSECTION LOCATION: Unknown	SITE DRAWING AVAILABLE?	<input type="radio"/> YES <input type="radio"/> NO	
DIRECTION OF TRAVEL: North-West	REPLACEMENT FOR EXISTING SHELTER*	<input type="radio"/> YES <input type="radio"/> NO	
Bus Stop Design Details			
Have the BC Transit Infrastructure design guidelines been read?		<input type="radio"/> YES <input type="radio"/> NO	
Will the site upgrades conform to the guidelines?		<input type="radio"/> YES <input type="radio"/> NO	
Will the site be accessible?		<input type="radio"/> YES <input type="radio"/> NO	
Will land negotiations be required?		<input type="radio"/> YES <input type="radio"/> NO	
*municipality is responsible for removal of existing shelter prior to installation.			
Shelter Construction Options – Choose your preferred shelter type, then specify lighting option. Reference the Transit Shelter Program Brochure for visuals.			
T1 Series – Bench	<input type="checkbox"/> T1 Bench	Lighting Options – All Shelters <input type="checkbox"/> Non-illuminated <input type="checkbox"/> Grid LED illuminated <input type="checkbox"/> Solar LED illuminated Extra Options <input type="checkbox"/> Garbage <input type="checkbox"/> Schedule frame <input type="checkbox"/> Lit ad panel <input type="checkbox"/> Non-lit ad panel <input type="checkbox"/> Additional bench <input type="checkbox"/> Bike rack <input type="checkbox"/> Glass walls <input type="checkbox"/> Additional back walls <input type="checkbox"/> Green roof* <input type="checkbox"/> USB charging ports <input type="checkbox"/> Visual indicator of a passenger inside shelter <input type="checkbox"/> Bicycle locker <input type="checkbox"/> Map display	
T1 Series – ID Post Mounted Seat	<input type="checkbox"/> 1 x T1 ID post mounted seat		
	<input type="checkbox"/> 2 x T1 ID post mounted seat		
T2 Series – Low to medium levels of passenger boardings per weekday (up to 50)	<input type="checkbox"/> T2 Cantilever		
T3 Series – Moderate to high levels of passenger boardings per weekday (21-200)	<input type="checkbox"/> T3 Cantilever		
	<input type="checkbox"/> T3 Sidewalls		
T4 Series – High levels of passenger boardings per weekday (200+), Park & Rides, Small exchanges	<input type="checkbox"/> T4 Cantilever		
	<input type="checkbox"/> T4 Sidewalls		
E2 Series – Low to medium levels of passenger boardings per weekday (up to 50)	<input type="checkbox"/> E2		
E3 Series – High levels of passenger boardings per weekday (100-200)	<input type="checkbox"/> E3		
E4 Series – High levels of passenger boardings per weekday (200+) Park & Rides, small exchanges	<input type="checkbox"/> E4		
OPTION: E Series Harsh Weather glass	<input type="checkbox"/> E Series harsh weather		
Signature Series – Glass wall design with a glass roof	<input type="checkbox"/> Signature series		

Note: Photos and explanations of the shelter styles can be found in the full brochure in Appendix B

*Green Roof option only available for E-Series & T-Series 4 Post Shelters. Details of planting to be confirmed prior to order.

[Submit Form](#)

For more information, contact: newshelterprogram@bctransit.com

Appendix B

Detailed Schedule of Costs

Shelter Type: BC Transit Type 1 (T1)

Where to use:

- Locations that require a small upgrade or where shelters are not practical

Included: Vandal and weather resistant wood finish on bench; Option for a bench with a back rest or ID pole mounted seat (1 or 2 seater) Pairs nicely with a vandal resistant garbage can.

Excluded: Price excludes taxes, additional costs incurred for installation such as ferry and travel costs (*refer to page 22 for details*)



Bench Seat
\$2,750



ID Pole Mounted Seat
\$3,280

Shelter Type: BC Transit Type 2 (T2)

Where to use:

- Bus stops with low to medium levels of daily passenger boardings, not higher than 10-20 per weekday
- Bus stops with restricted space due to property lines, or obstructions which cannot be relocated

Included: The Cantilevered roof system with wood slat inserts, support columns; vandal resistant perforated aluminum back panels or tempered glass walls; 2 upper back panel inserts with BC Transit logo, two person wooden bench and an unlit system icon. Prices referenced are for installation of the basic model with no lighting or extra features

Excluded: Price excludes taxes, additional costs incurred for installation such as ferry and travel costs or add-on's such as lighting (*refer to page 22 for details*)



Cantilever Base Shelter
\$16,109

Shelter Type: BC Transit Type 3 (T3)



Cantilever Base Shelter
\$23,012



Standard Base Shelter
\$24,893

Where to use:

- Bus stops with average daily ridership of 20-200 passengers

Included: The Cantilevered roof system or side wall options; wood slat inserts in roof; support columns; vandal resistant perforated aluminum panels or tempered glass walls; 2 upper side panel inserts with BC Transit logo, two person wooden bench and an unlit system icon. Prices referenced are for installation of the basic model with no lighting.

Excluded: Price excludes taxes, additional costs incurred for installation such as ferry and travel costs and add-on's such as lighting (*refer to page 22 for details*)

Shelter Type: BC Transit Signature Series

Where to use:

- Bus stops with average daily ridership of 20-200 passengers

Included: Glass wall design with a glass roof; 2 upper side panel inserts with BC Transit logo, two person wooden bench and an unlit system icon. Prices referenced are for installation of the basic model with no lighting.

Excluded: Price excludes taxes, additional costs incurred for installation such as ferry and travel costs or add-on's such as lighting (*refer to page 22 for details*)



Signature Series Shelter
\$19,876

Shelter Type: BC Transit Type 4 (T4)



Cantilever Base Shelter
\$34,898



Standard Base Shelter, extra panel
\$34,117

Where to use:

- Bus stops with high daily ridership (400+), or for park and ride facilities (less than 100 stalls) and small transit exchanges

Included: The Cantilevered roof system or optional side panels; wood slat roof inserts; support columns; vandal resistant perforated aluminum panels or tempered glass walls; 2 side panel inserts with BC Transit logo, two person wooden bench and an unlit system icon. Prices referenced are for installation of the basic model with no lighting.

Excluded: Price excludes taxes, additional costs incurred for installation such as ferry and travel costs, additional add-on's such as lighting (*refer to page 22 for details*)

Shelter Type: BC Transit Type 5 (T5)

Type 5 Shelters are customized per application for large transit exchanges, park and rides with 100+ parking stalls. Pricing is quoted separately specific to needs assessment. Contact BC Transit for more information.



Prices starting at
\$59,902

Shelter Type: BC Transit E2

Where to use:

- Bus stops with low to medium levels of daily passenger boardings, not higher than 40-50 passenger boardings per week.
- Bus stops with restricted space due to property lines, or obstructions which cannot be relocated

Included: The Standard roof system with wood slat inserts, side walls; vandal resistant perforated aluminum back panels or tempered glass walls; 2 upper back panel inserts with BC Transit logo, two person wooden bench and an unlit system icon. Prices referenced are for installation of the basic model with no lighting

Excluded: Price excludes taxes, additional costs incurred for installation such as ferry and travel costs or add-on's such as lighting (*refer to page 21 for details*)



E2 Base Shelter
\$17,539

Shelter Type: BC Transit E3

Where to use:

- Bus stops with average daily ridership of 20-200 passengers

Included: The Standard roof system with side walls; wood slat inserts in roof; support columns; vandal resistant perforated aluminum panels or tempered glass walls; 2 upper side panel inserts with BC Transit logo, two person wooden bench and an unlit system icon. Prices referenced are for installation of the basic model with no lighting.

Excluded: Price excludes taxes, additional costs incurred for installation such as ferry and travel costs and add-on's such as lighting and crating charges.



E3 Base Shelter
\$25,463

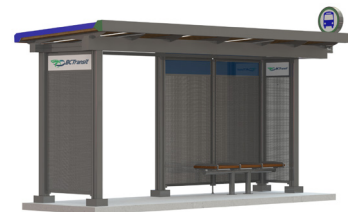
Shelter Type: BC Transit E4

Where to use:

- Bus stops with high daily ridership (400+), or for park and ride facilities (less than 100 stalls) and small transit exchanges

Included: The Cantilevered roof system or optional side panels; wood slat roof inserts; support columns; vandal resistant perforated aluminum panels or tempered glass walls; 2 side panel inserts with BC Transit logo, two person wooden bench and an unlit system icon. Prices referenced are for installation of the basic model with no lighting.

Excluded: Price excludes taxes, additional costs incurred for installation such as ferry and travel costs, additional add-on's such as lighting and crating charges.



E4 Base Shelter
\$34,330

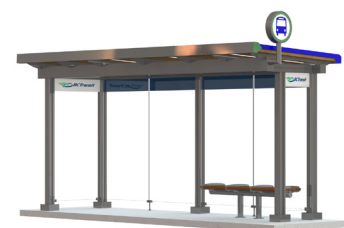
Shelter Type: Harsh Weather (E3 or E4)

Where to use:

- In areas that experience frequent inclement weather. The two or three panel front wall offers greater protection from the elements

Included: The standard roof system with tempered glass side, rear and two panel front walls; 2 side panel inserts with BC Transit logo, two person wooden bench and an unlit system icon. Prices referenced are for installation of the basic model with no lighting.

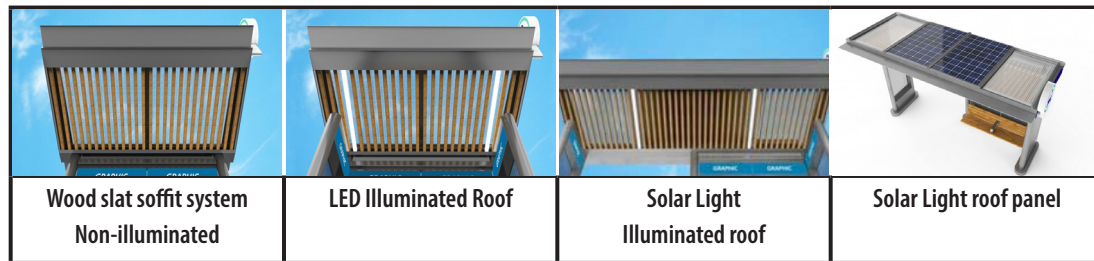
Excluded: Price excluded taxes, additional costs incurred for installation such as ferry and travel cost, additional add-on's such as lighting and crating charges.



Harsh Weather Base Shelter (Glass)
E3 \$27,707
E4 \$35,631

SHELTER LIGHTING OPTIONS

All shelters have the option for non-illuminated, illuminated with LED lighting or solar lighting.



SHELTER AD PANEL OPTIONS

Shelters have the option for illuminated or non-illuminated Ad Panels and Directory displays.

All advertising revenue and contract management resides with the Municipality.



ADDITIONAL OPTIONS







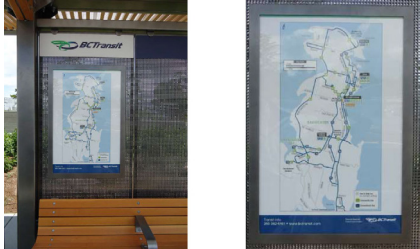
- Tempered glass back, partial front & side walls (optional for harsh weather shelters)
- Impact resistant LED light bars for bright and efficient LED illumination
- Self-sustainable solar kit, which integrates into the roof system
- Lit system Icons (standard if you purchase LED/Solar lighting – optional for unlit shelters)
- Add or remove wall panels to suit needs
- Add or remove wooden cantilever benches to suit needs
- Illuminated or non-illuminated Ad or directory Display panels

OPTIONAL ADD-ON'S

These costs listed below are cost shared with the municipality if requested on the initial shelter order.

Optional Add-On's		Price	
1	Garbage Receptable, round	\$4,603	
2	Schedule frame 7" x 24", pole mounted	\$483	
3	Ad panel **	Illuminated \$4,089 Non-Illuminated \$3,094	
4	Additional bench, Cantilevered	\$1,898	
5	Bike Rack	\$748	
6	Additional back walls for angled roof/round base shelters	\$3,280	
7	Additional back walls for flat roof/square base shelters	\$3,280	
8	Green Roof <i>Only available for select 4 Post Shelters. Contact program for details.</i>	\$3,683	

** advertising contract and revenue is the responsibility of the municipality

Optional Add-On's		Price	
10	USB charging ports	\$2,210	
11	Solar lighting option, LED +	Starting at \$6,744	
12	Visual indicator of a passenger inside shelter	\$4,603	
13	Bike Locker	\$3,453	
14	Grid Lighting Option, LED*	Starting at \$1,421	
15	Additional Bench	E Series \$1,427 T Series \$1,898	
16	Map Display***	\$1,841	

* requires electrician on site during install

+ requires install of solar grounding kit in slab

*** excludes installation costs

ADDITIONAL COSTS

Additional fees outlined below will also apply and will also be estimated in your contract. These costs are cost shared with the municipality. See Appendix C for travel pricing.

Cost Plus Item	Applicable Shelter Types	Plus	Inclusions
PERMIT FEES	AS APPLICABLE	15%	Admin fee to fill out application, local pickup of approved permit and City fees
TRAFFIC CONTROL	AS REQUIRED	15%	Flagging crews (TCP), safety and traffic control signage, pedestrian control, traffic mgmt plan (TMP), lane closures
CONCRETE PEDESTALS	AS REQUIRED	15%	Price will vary per pole, depending on slope of the site and the number of poles requiring a pedestal
WORK DELAYS	AS APPLICABLE	15%	Monarch will provide our Standard Rate Sheet but other subcontractors like flagging, hydrovac and concrete may have minimum charges
CORING EXTRAS	AS APPLICABLE	15%	For cantilevered shelters only. Monarch will make every effort to install multiple caissons in the same trip to reduce setup fees from the flagging, hydrovac and concrete subcontractors. Monarch would like to be able to add any extra charges to the Cost Plus protocol if there are reasons beyond our control in keeping a lean schedule.

Appendix C

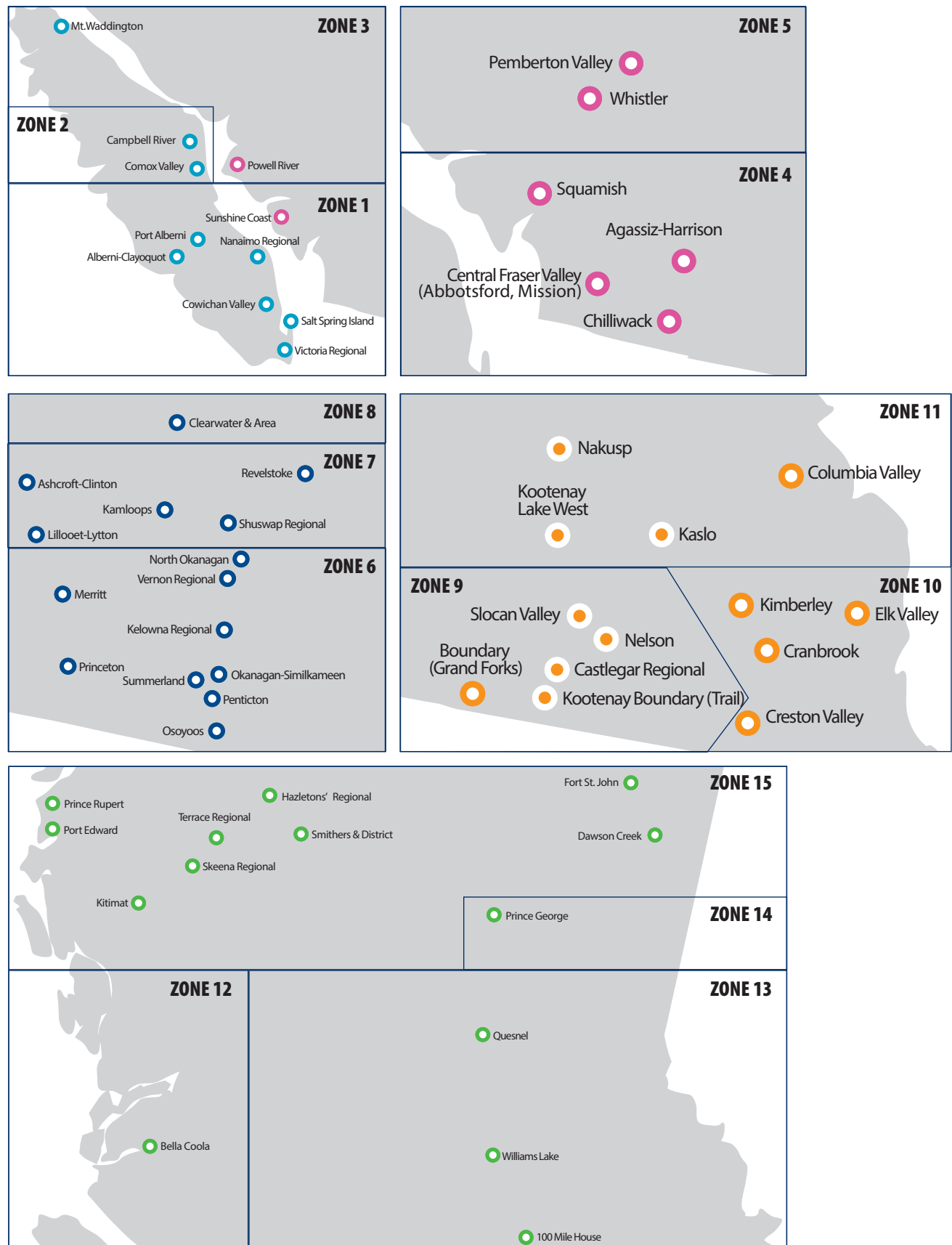
Travel Rate Prices

BCT Travel Matrix Price Schedule

Shelter Type	Trip Quantity	Travel & LOA Zones															Notes
		1	2	3	4	5	6	7	8	9	10	11	12	13	14	15	
T2S, T3S, T4S, E2, E3, E4 Shelter	(4) Shelter Load	\$980.00	\$980.00	\$1,255.00	\$980.00	\$980.00	\$980.00	\$1,040.00	\$1,093.00	\$1,225.00	\$1,588.00	\$1,482.00	\$1,800.00	\$1,172.00	\$1,482.00	\$2,385.00	Price per shelter based on a (4) shelter load
	(3) Shelter Load	\$1,184.00	\$1,184.00	\$1,573.00	\$1,184.00	\$1,184.00	\$1,184.00	\$1,286.00	\$1,357.00	\$1,534.00	\$2,017.00	\$1,875.00	\$2,300.00	\$1,463.00	\$1,875.00	\$3,080.00	Price per shelter based on a (3) shelter load
	(2) Shelter Load	\$1,625.00	\$1,625.00	\$2,210.00	\$1,625.00	\$1,625.00	\$1,625.00	\$1,779.00	\$1,885.00	\$2,150.00	\$2,875.00	\$2,663.00	\$3,300.00	\$2,044.00	\$2,663.00	\$4,469.00	Price per shelter based on a (2) shelter load
	(1) Shelter Load	\$2,950.00	\$2,950.00	\$4,119.00	\$2,950.00	\$2,950.00	\$2,950.00	\$3,257.00	\$3,469.00	\$4,000.00	\$5,450.00	\$5,025.00	\$6,300.00	\$3,788.00	\$5,025.00	\$8,638.00	Price per shelter based on a (1) shelter load
T2C, T3C, T4C Shelter	(4) Shelter Load	\$1,644.00	\$1,644.00	\$1,229.00	\$1,644.00	\$1,644.00	\$1,644.00	\$2,004.00	\$2,110.00	\$2,375.00	\$3,025.00	\$2,813.00	\$3,450.00	\$2,269.00	\$2,663.00	\$4,469.00	Price per shelter & caissons based on a (4) shelter load
	(3) Shelter Load	\$2,092.00	\$2,092.00	\$2,871.00	\$2,092.00	\$2,092.00	\$2,092.00	\$2,571.00	\$2,713.00	\$3,067.00	\$3,934.00	\$3,650.00	\$4,500.00	\$2,925.00	\$3,550.00	\$5,959.00	Price per shelter & caissons based on a (3) shelter load
	(2) Shelter Load	\$2,838.00	\$2,838.00	\$4,007.00	\$2,838.00	\$2,838.00	\$2,838.00	\$3,557.00	\$3,769.00	\$4,300.00	\$5,300.00	\$4,875.00	\$6,150.00	\$4,088.00	\$4,875.00	\$8,488.00	Price per shelter & caissons based on a (2) shelter load
	(1) Shelter Load	\$5,075.00	\$5,075.00	\$7,413.00	\$5,075.00	\$5,075.00	\$5,075.00	\$6,513.00	\$6,938.00	\$8,000.00	\$10,300.00	\$9,450.00	\$12,000.00	\$5,575.00	\$9,450.00	\$16,675.00	Price per shelter & caissons based on a (1) shelter load

Multiple locations can be combined to equal higher shelter loads as long as they follow the same route.

Travel Rate Zone Matrix



Appendix D

Spare Parts Prices

Item	Spare Part Description	Shelter Type	Total Price
1	Backwall beam w/bracket	T-Series	\$465
2	Back wall	T-Series	\$825
3	Base plate cover (4" or 6" oblong)	T-Series	\$282
4	Base plate cover (4" or 6" round)	T-Series	\$224
5	Electrical box	T-Series	\$306
6	End Cap	T-Series	\$359
7	Extrusion- T3 Bottom Back	T-Series	\$302
8	Extrusion- T3 Bottom Front	T-Series	\$309
9	Extrusion- T3 Sunshade	T-Series	\$358
10	Extrusion- T3 Top Back	T-Series	\$313
11	Extrusion- T3 Top Front	T-Series	\$207
12	Graphic - Back Wall	T-Series	\$36
13	Graphic - Side Wall	T-Series	\$36
14	LED Lite Bar	T-Series	\$138
15	T3 Polycarbonate Roof Panel	T-Series	\$155
16	Rear connector	T-Series	\$493
17	Roof cross member	T-Series	\$396
18	Roof front connector	T-Series	\$354
19	Side wall	T-Series	\$1,612
20	Sidewall support pole	T-Series	\$1,223
21	Support pole	T-Series	\$537
22	System icon Assembly	T-Series	\$488
23	System icon face only	T-Series	\$99
24	Bench wood slat	T-Series	\$62
25	Roof wood slat	T-Series	\$39

Other parts available upon request.

Appendix E

Sample Concrete Pad Drawings

Disclaimer: these drawings are intended to be for reference only. Specific drawings for your shelter will be supplied at the time of order. Please contact BC Transit if you have any questions about shelter sizing for your locations.

LMC *Lucid Mgmt Group*

1-855-353-8243

GENERAL NOTES INCLUDING FINISHING SPECIFICATIONS

SEE "C" - TYPE 3 SHELTER FOUNDATIONS CHART FOR ALLOWABLE LOADINGS

CUSTOMER APPROVAL

DATE


1/4/2013

CURR. DATE 03/20/2013
PROJECT START: 10/06/2011
PROJECT #: SALES
DRAWN BY: DARREN PENNER
SCALE: 1/2" = 1'-0"
WEIGHT (BBS): N/A
PAGE: 1

TRANSIT SHELTER
TYPE 3 SHELTER W/ SIDE WALLS -
IF TRAILER FOUNDATION DETAIL

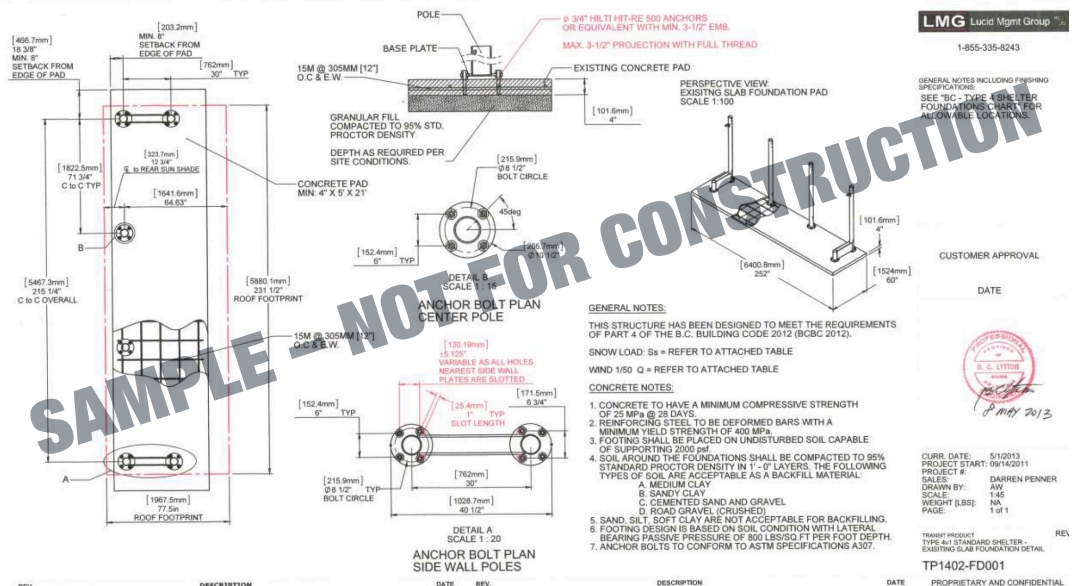
TP1301-FD002

DISSEMINATION AND CONFIDENTIALITY

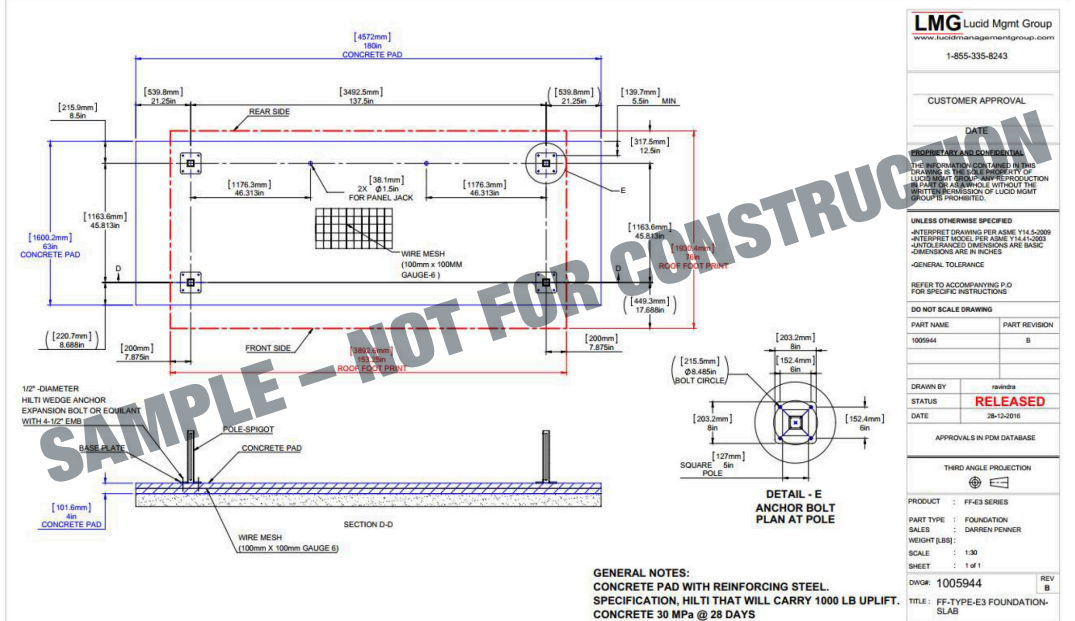
THE INFORMATION CONTAINED IN THIS DOCUMENT IS THE SOLE PROPERTY OF LUCID MGMT GROUP AND IS UNCLASSIFIED EXCEPT WHERE SHOWN OTHERWISE. WITHOUT THE WRITTEN PERMISSION OF LUCID MGMT GROUP IT IS PROHIBITED.

T-Series Caisson Foundations

Style T4S

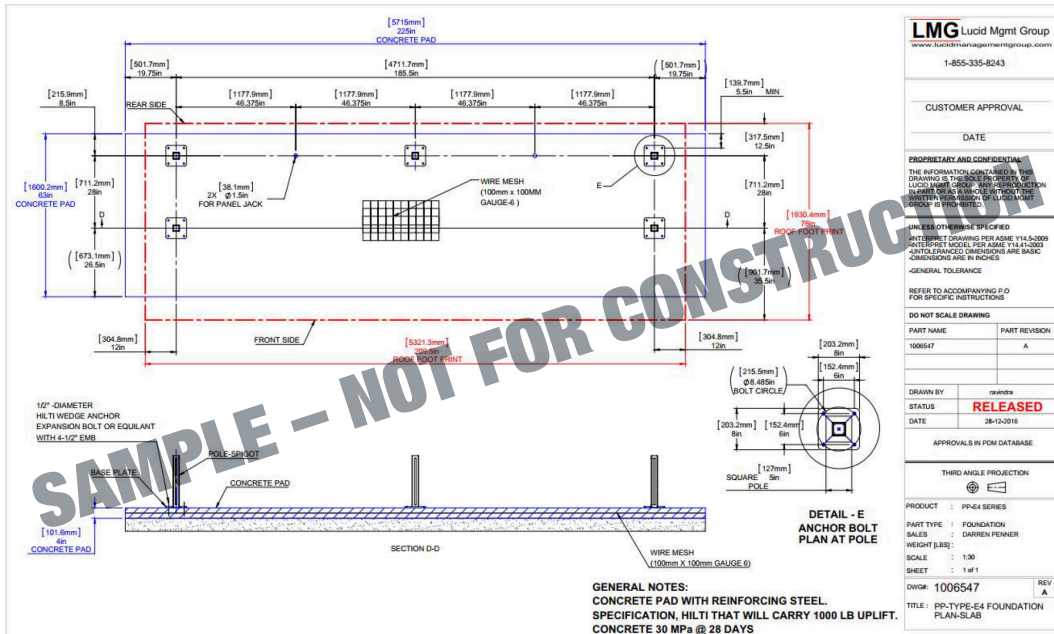


Style E3

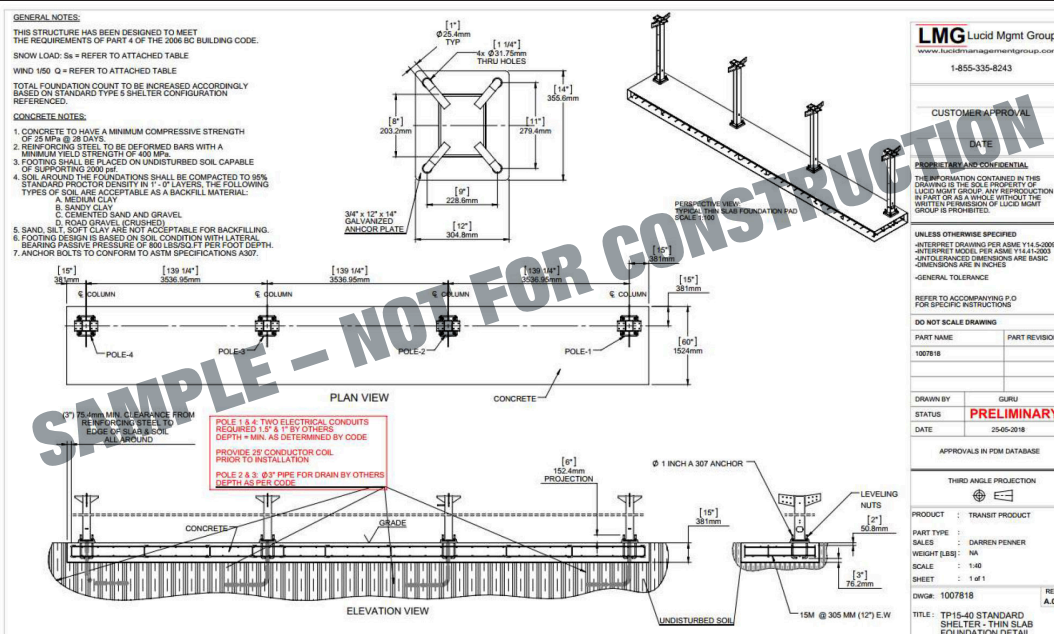


T-Series Caisson Foundations

Style E4



Style T5 –
EXAMPLE ONLY



Points of Contact

Please contact BC Transit for further information if you are interested in shelter infrastructure of this type or for more information on access to provincial capital funding.

newshelterprogram@bctransit.com



520 Gorge Road East
Victoria, BC V8W 2P3
bctransit.com